



**IDEXX**

## **Water Testing Solutions**

Product Catalog



# Welcome

**IDEXX is your total solution for water testing products, services, and support.**

IDEXX products simplify the testing process, saving you time and money. With IDEXX, you'll find easy, rapid, accurate tests for the parameters you analyze most often, as well as a full line of water-testing supplies, equipment, and accessories—all supported by a dedicated team of technical and regulatory experts.

To find an IDEXX representative near you, visit our website at **[idexx.com/water](https://www.idexx.com/water)**.  
To place an order in North America, call **1-800-321-0207**.  
In Europe, call **+00800 727 43399**.

- 6–7 Worldwide approvals/acceptances
- 8–9 IDEXX test comparison
- 10 IDEXX Tecta system
- 11 Coliform and *E. coli* testing
- 12 Enterococci testing
- 13 *Pseudomonas aeruginosa* and *Legionella pneumophila* testing
- 14–15 Quanti-Tray\* quantification system
- 16–17 Heterotrophic plate count/total viable count testing
- 18–19 Positive and negative culture controls for IDEXX reagents
- 20–21 Additional products and accessories
  - 22 *Cryptosporidium* and *Giardia* detection
  - 23 IDEXX Water Academy, IDEXX Online Orders, and Water Customer Portal
- 24–27 Product line overview and catalog numbers





# The freedom of IDEXX Tecta: anywhere, anytime.

Automated incubation and reading. Results by email within hours. No sample preparation. Easy to use. U.S. EPA approved.<sup>†</sup>

## How can you do more with Tecta?



### Construction and distribution repairs

Anyone can start a test, 24/7, with results sent by email. Get the crews back to work—no more unnecessary delays.



### Operational testing

Your operators can use the Tecta system to verify treatment efficacy and improve efficiency.



### Outside the lab

Tecta instruments can be set up in a range of nonlaboratory settings, closer to testing locations.



### Downtown lab

Tecta\* instruments can be installed anywhere, including an office building. Save on drive time and fuel.



The IDEXX Tecta\* system is a complete, self-contained automated microbiology testing solution. The method is U.S. EPA-approved for detecting total coliforms and *E. coli* in drinking water.<sup>†</sup>

- Full automation of incubation and test interpretation eliminates the need for a visual read of the test.
- Quantification and presence/absence modes.
- Available test cartridges: total coliforms and *E. coli*, *E. coli* only, fecal coliforms, and enterococci.



## HOW IT WORKS

<sup>†</sup>Tectalert EC/TC medium and Tecta instruments are U.S. EPA approved at 40 CFR Part 141, listed as a method in Presence/Absence Method for the Simultaneous Detection of Total Coliforms and *Escherichia coli* (*E. coli*) in Drinking Water.

Worldwide approvals/acceptances

Country		Products approved	Water types
Argentina		Colilert*	Drinking water
Australia		Colilert, Colilert*-18, Quanti-Tray*, Quanti-Tray*/2000, Tecta* EC/TC	Drinking water
Austria		Colilert-18, Quanti-Tray, Quanti-Tray/2000	Drinking water
Belgium		Colilert-18, Enterolert*-DW, Quanti-Tray, Quanti-Tray/2000	Drinking water
Bosnia and Herzegovina		Colilert-18, Quanti-Tray, Quanti-Tray/2000	Drinking water
Brazil		Colilert, Colilert-18, Colisure*, Enterolert*, Quanti-Tray, Quanti-Tray/2000, SimPlate* for HPC	Drinking water
Bulgaria		Colilert-18, Quanti-Tray, Quanti-Tray/2000	Drinking water
Canada		Colilert, Colilert-18, Colisure, Enterolert, Legiolert*, Quanti-Tray, Quanti-Tray/2000, SimPlate for HPC, Tecta EC/TC	Drinking water, surface water, groundwater, wastewater, cooling tower water
Chile		Colilert, Quanti-Tray, Quanti-Tray/2000	Drinking water
China		Colilert, Colilert-18, Filta-Max*, Filta-Max xpress*, Pseudalert*, Quanti-Tray, Quanti-Tray/2000	Drinking water, surface water, groundwater, drinking water for poultry and livestock, wastewater
Colombia		Colilert, Colilert-18, Colisure	Drinking water
Costa Rica		Colilert, Quanti-Tray, Quanti-Tray/2000	Drinking water
Croatia		Colilert, Colilert-18, Quanti-Tray, Quanti-Tray/2000	Drinking water, bottled water
Cyprus		Colilert-18, Quanti-Tray, Quanti-Tray/2000	Drinking water
Czech Republic		Colilert-18, Quanti-Tray, Quanti-Tray/2000	Drinking water, bottled water, treated sludge, biodegradable waste
Denmark (Greenland)		Colilert-18, Quanti-Tray, Quanti-Tray/2000	Drinking water
El Salvador		Colilert, Colilert-18, Colisure	Drinking water
Estonia		Colilert-18, Quanti-Tray/Quanti-Tray 2000	Drinking water
Finland		Colilert-18, Pseudalert*, Quanti-Tray, Quanti-Tray/2000	Drinking water, bathing water, pools
France		Colilert-18, Quanti-Tray, Quanti-Tray/2000	Drinking water, marine shellfish farming
Germany		Colilert-18, Enterolert-DW, Pseudalert, Quanti-Tray, Quanti-Tray/2000	Drinking water, spas and pools
Greece		Colilert-18, Quanti-Tray, Quanti-Tray/2000	Drinking water
Guatemala		Colilert, Colilert-18, Colisure, Quanti-Tray, Quanti-Tray/2000	Drinking water, source water
Hungary		Colilert, Colilert-18, Enterolert-DW, Legiolert Pseudalert, Quanti-Tray, Quanti-Tray/2000	Drinking water, bathing water
Iceland		Colilert, Quanti-Tray	Drinking water
India		Colilert, Colilert-18, Pseudalert	Drinking water, packaged drinking water
Ireland		Colilert*, Colilert*-18, Enterolert*-DW, Quanti-Tray*, Quanti-Tray*/2000	Drinking water, bathing water
Italy		Colilert-18, Enterolert-DW, Enterolert*-E, Filta-Max*, Pseudalert*, Quanti-Tray, Quanti-Tray/2000	Drinking water, surface water, spas and pools, sludge wastewater
Jamaica		Colilert, Colilert-18, Colisure*, Quanti-Tray, Quanti-Tray/2000	Drinking water, source/surface water, wastewater, bathing water
Japan		Colilert	Drinking water

**Note:** For specific up-to-date product approvals, please visit [idexx.com/water](https://www.idexx.com/water) or contact your local IDEXX representative.

Country		Products approved	Water types
Latvia		Colilert* 250, Colilert-18, Enterolert* 250, Enterolert-DW, Pseudalert* 250, Quanti-Tray, Quanti-Tray/2000	Drinking water, bottled water, surface water, groundwater
Lithuania		Colilert-18, Quanti-Tray, Quanti-Tray/2000	Drinking water
Luxembourg		Colilert-18, Quanti-Tray, Quanti-Tray/2000	Drinking water
Malta		Colilert-18, Quanti-Tray, Quanti-Tray/2000	Drinking water
Mexico		Colilert, Colilert-18, Enterolert, Filta-Max, Filta-Max xpress*	Drinking water, bottled water, source/surface water, bathing water, wastewater
Netherlands		Colilert-18, Quanti-Tray, Quanti-Tray/2000	Drinking water
New Zealand		Colilert, Colisure, Enterolert, Quanti-Tray, Quanti-Tray/2000, Tecta* EC/TC	Drinking water, bathing water
Norway		Colilert-18, Enterolert-DW, Quanti-Tray, Quanti-Tray/2000	Drinking water, bottled water
Oman		Colilert-18	Drinking water, source/surface water, bathing water, wastewater
Panama		Colilert, Colilert-18, Quanti-Tray, Quanti-Tray/2000	Drinking water
Philippines		Colilert, Colilert-18, Colisure, Tecta EC/TC	Drinking water
Poland		Colilert-18, Quanti-Tray, Quanti-Tray/2000	Drinking water
Portugal		Colilert-18, Quanti-Tray, Quanti-Tray/2000	Drinking water
Romania		Colilert-18, Quanti-Tray, Quanti-Tray/2000	Drinking water
Russia		Colilert-18, Enterolert-DW, Pseudalert, Quanti-Tray, Quanti-Tray/2000	Drinking water
Slovakia		Colilert-18, Quanti-Tray, Quanti-Tray/2000	Drinking water
Slovenia		Colilert-18, Quanti-Tray, Quanti-Tray/2000	Drinking water
South Africa		Colilert, Quanti-Tray, Quanti-Tray/2000, SimPlate* for HPC	Drinking water, wastewater
South Korea		Colilert, Tecta EC/TC	Drinking water
Spain		Colilert-18, Enterolert-DW, Pseudalert, Quanti-Tray, Quanti-Tray/2000	Drinking water, pool
Sweden		Colilert-18, Enterolert-E, Quanti-Tray, Quanti-Tray/2000	Drinking water, bathing water
Ukraine		Colilert*-18, SimPlate* for HPC	Drinking water
United Kingdom (England, North. Ireland, Scotland, Wales, Gibraltar)		Colilert-18, Enterolert*-DW, Filta-Max* Autowash, Quanti-Tray*, Quanti-Tray*/2000	Drinking water, bottled water
United States		Colilert*, Colilert-18, Colisure*, Enterolert*, Filta-Max*, Filta-Max Autowash, Filta-Max xpress*, Pseudalert*, Quanti-Tray, Quanti-Tray/2000, SimPlate for HPC, Tecta* EC/TC	Drinking water, ambient water, groundwater, source/surface water, LT2 testing, wastewater, dairy water (FDA), agricultural produce water (FDA), pools and spas (New Jersey and Rhode Island), recycled water <sup>s</sup>
Uruguay		Colilert, Colilert-18, Quanti-Tray, Quanti-Tray/2000	Drinking water
Venezuela		Colilert, Colilert-18, Quanti-Tray, Quanti-Tray/2000	Drinking water, bottled water, source water
Vietnam		Colilert-18, Quanti-Tray, Quanti-Tray/2000	Wastewater
Zimbabwe		Colilert	Drinking water, source/surface water, bathing water, wastewater



# IDEXX test comparison



## Snap pack technology

**Colilert, Colilert-18, Colisure, Enterolert, Enterolert-E, Enterolert-DW, Legiolert, Pseudalert and HPC for Quanti-Tray\*** reagents come in snap packs. This packaging allows for easy, compact storage of our reagents at room temperature. Our “five-across” format requires minimal shelf space and offers a wide spout for fast, easy pouring. The plastic casing acts as a moisture barrier, preserving the product without the need for refrigeration, and the transparent front allows you to visually inspect the reagent before adding it to a sample. To make your laboratory documentation easily traceable, we’ve printed a lot number and an expiration date at the top of each snap pack.

## Defined Substrate Technology\*

Defined Substrate Technology\* (DST\*) is the foundation for many of IDEXX’s most innovative tests. Our coliform/*E. coli* reagents simultaneously detect coliforms and *E. coli* through the activity of the enzymes beta-galactosidase and beta-glucuronidase, respectively. Enzyme-specific nutrient indicators produce the definitive, easy-to-read endpoints that are characteristic of our tests. For example, in Colilert, ONPG turns yellow when metabolized by coliforms and MUG fluoresces under UV light when metabolized by *E. coli*. DST tests can produce presence/absence or quantitative results. Sensitive to 1 organism/100 mL, these tests require no media preparation, no filtering, and no confirmations—and they take less than 1 minute of hands-on time to prepare a test.



Product	Presence/absence		Quantification
<b>Colilert*</b> <b>Analyte</b> Total coliforms and <i>E. coli</i> <b>Time to result</b> 24 hours			 <b>Result:</b> Colorless = Negative; Yellow = Total coliforms; Yellow/fluorescent = <i>E. coli</i>
<b>Colilert*-18</b> <b>Analyte</b> Total coliforms and <i>E. coli</i> or fecal coliforms <b>Time to result</b> 18 hours			 <b>Result:</b> At 35°C Colorless = Negative; Yellow = Total coliforms; Yellow/fluorescent = <i>E. coli</i> <b>Result:</b> At 44.5°C Colorless = Negative; Yellow = Fecal coliforms
<b>Colisure*</b> <b>Analyte</b> Total coliforms and <i>E. coli</i> <b>Time to result</b> 24 hours			 <b>Result:</b> Yellow = Negative; Magenta = Total coliforms; Magenta/fluorescent = <i>E. coli</i>
<b>Enterolert* / Enterolert*-E</b> <b>Analyte</b> Enterococci <b>Time to result</b> 24 hours			 <b>Result:</b> No blue fluorescence = Negative; Blue fluorescence = Enterococci
<b>Enterolert*-DW</b> <b>Analyte</b> Enterococci <b>Time to result</b> 24 hours			 <b>Result:</b> Blue color = Negative; Green color = Positive
<b>Pseudalert*</b> <b>Analyte</b> <i>Pseudomonas aeruginosa</i> <b>Time to result</b> 24 hours			 <b>Result:</b> No blue fluorescence = Negative; Blue fluorescence = <i>Pseudomonas aeruginosa</i>
<b>Legiolert*</b> <b>Analyte</b> <i>Legionella pneumophila</i> <b>Time to result</b> 7 days			 <b>Result:</b> Tan color = Negative; Brown color and/or turbidity = <i>Legionella pneumophila</i>

**Note:** Fluorescent results are determined by viewing under UV light.



# IDEXX Tecta\* system

A complete, self-contained water testing system.

## Tecta\* instruments



The Tecta\* B16 Instrument can provide laboratory-grade results for up to 16 samples at once, using multiple incubation temperatures and test types.

- Test cartridges are available for detecting total coliforms and *E. coli*, *E. coli* only, fecal coliforms, and enterococci.
- Cartridges are read continuously, and an email alert is sent automatically when a positive result is detected.
- Positive results in as little as 2 hours, depending on level of contamination; negative results confirmed in 18 or 24 hours, depending on test type.
- No sample preparation.
- U.S. EPA approved for drinking water.\*



The smaller and more compact Tecta\* B4 Instrument can provide laboratory-grade results for up to 4 samples at once.

Easy-to-use cartridges with no required sample preparation



HOW IT WORKS



\*Tectalert EC/TC medium and Tecta instruments are U.S. EPA approved at 40 CFR Part 141, listed as a method in Presence/Absence Method for the Simultaneous Detection of Total Coliforms and *Escherichia coli* (*E. coli*) in Drinking Water.

# Coliform and *E. coli* testing

## Colilert

A proven and trusted global standard.

The Colilert\* Test is a global leader in testing for coliforms and *E. coli*, providing confirmed results in 24 hours or less. This ready-to-use media requires less than a minute of hands-on time and eliminates the need for subjective interpretation found in traditional methods. With dozens of approvals worldwide, the Colilert\* Test is trusted globally for rapid, accurate results.



IDEXX-QC Coliform and *E. coli* and IDEXX-QC *E. coli* are also available for quality control purposes. See pages 18–19 for more details.

## Colilert-18

Afternoon and rush sample testing with the ISO 9308-2 method.

The Colilert\*-18 Test's enhanced formulation provides coliform/*E. coli* or fecal coliform results in just 18 hours—6 hours sooner than the Colilert\* Test. This shorter incubation period allows laboratories to improve workflow by reading afternoon samples the next morning.



IDEXX-QC Coliform and *E. coli*, IDEXX-QC Fecal coliform, and IDEXX-QC *E. coli* are also available for quality control purposes. See pages 18–19 for more details.

## Colisure

Distinct results with a flexible read window.

The Colisure\* Test results are definitive at 24 hours and can be read for up to 48 hours—offering unparalleled workflow flexibility. This test's distinct magenta color means there is no mistaking a positive result.



IDEXX-QC Coliform and *E. coli* and IDEXX-QC *E. coli* are also available for quality control purposes. See pages 18–19 for more details.

## Tectalert EC/TC, Tectalert EC, Tectalert FC

Automated testing with emailed results.

Tectalert cartridges are available to detect *E. coli* and total coliforms in 18 hours or less, *E. coli* only in 16 hours or less, and fecal coliforms in 18 hours or less. Results are emailed to you as soon as they are ready.



Presence/Absence and Quanti-Tray comparators are available for the Colilert and Colilert-18 tests.

Icon key:





# Enterococci testing

## Enterolert

### A revolutionary enterococci test.

The Enterolert\* Test is used for the detection and quantification of enterococci in water samples. Positive results fluoresce under UV light.



IDEXX-QC Enterococci is also available for quality control purposes. See pages 18–19 for more details.



## Enterolert-E

### Designed to correlate with ISO 7899-1.

The Enterolert\*-E Test is used for the detection and quantification of enterococci in water samples. This test has been developed to correlate with the European Reference Method, ISO 7899-1.



IDEXX-QC Enterococci is also available for quality control purposes. See pages 18–19 for more details.



## Enterolert-DW

### Easily detect enterococci in drinking water.

The Enterolert\*-DW Test accurately detects enterococci in drinking water in 24 hours. A color change from blue to green indicates a positive result, eliminating the subjective interpretation of traditional test methods. This test is suitable for both chlorinated and nonchlorinated drinking water, as well as certain nonpotable water types.



IDEXX-QC Enterococci Drinking Water is also available for quality control purposes. See pages 18–19 for more details.



## Tectalert ENT

### Automated testing with emailed results.

The Tectalert ENT Test is used with the IDEXX Tecta\* automation system to detect enterococci in water samples in under 24 hours. Results are emailed to you as soon as they are ready.



**Note:** IDEXX also offers a 250 mL enterococci test that is suitable for certain testing applications, such as bottled water. Contact IDEXX or visit [idexx.com](http://idexx.com) to learn more.



# Pseudomonas aeruginosa testing

## Pseudalert

### Fast, accurate results for *Pseudomonas aeruginosa*.

The Pseudalert\* Test detects *Pseudomonas aeruginosa* in potable and nonpotable water, delivering definitive results in 24 hours. This test is available in 100 mL for presence/absence or quantification and 250 mL for presence/absence. Positive samples fluoresce blue under UV light.



IDEXX-QC *Pseudomonas aeruginosa* is also available for quality control purposes. See pages 18–19 for more details.



# Legionella pneumophila testing

## Legiolert

### Routine testing simplified.

The Legiolert\* Test detects *Legionella pneumophila* in potable and nonpotable waters in 7 days. A color change from tan to brown and/or turbidity indicates a positive result, eliminating the subjective interpretation of traditional culture methods. This test is available in a 100 mL format for quantification and is used with the Quanti-Tray\*/Legiolert\* system.



IDEXX-QC *Legionella pneumophila* is also available for quality control purposes. See pages 18–19 for more details.



### Legiolert\* Supplement Kit

Supplement kit required for the Legiolert Test's 100 mL potable protocol. Each kit is sufficient for at least 100 tests.



### Legiolert\* Pretreatment Kit

Pretreatment required for the Legiolert Test's nonpotable protocol. Each 100 mL vessel is sufficient for at least 100 tests.





# Quanti-Tray quantification system

## Quanti-Tray\* Sealer PLUS: One machine for all your quantification testing needs.

The Quanti-Tray\* system is a revolutionary advancement in bacterial enumeration. When used with IDEXX reagents, Quanti-Tray provides an easy sample-handling system to produce accurate bacterial counts. Quanti-Tray eliminates subjective colony interpretation and time-consuming confirmation. Streamline your quantification testing by using the Quanti-Tray system.

### Quanti-Tray Sealer PLUS

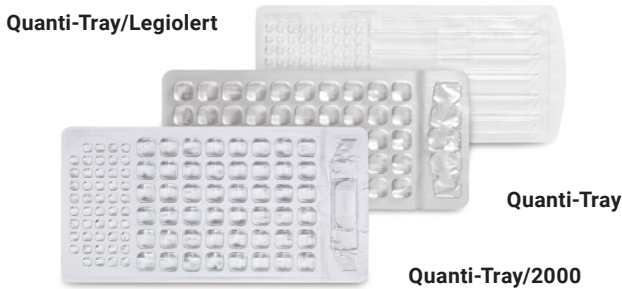
The Quanti-Tray\* Sealer PLUS makes quantification with the Quanti-Tray system possible, saving time and improving laboratory efficiency. Features include a 2- to 3-minute warm-up time, fast sealing of trays, energy-efficient design, and an access panel that makes cleaning easy.



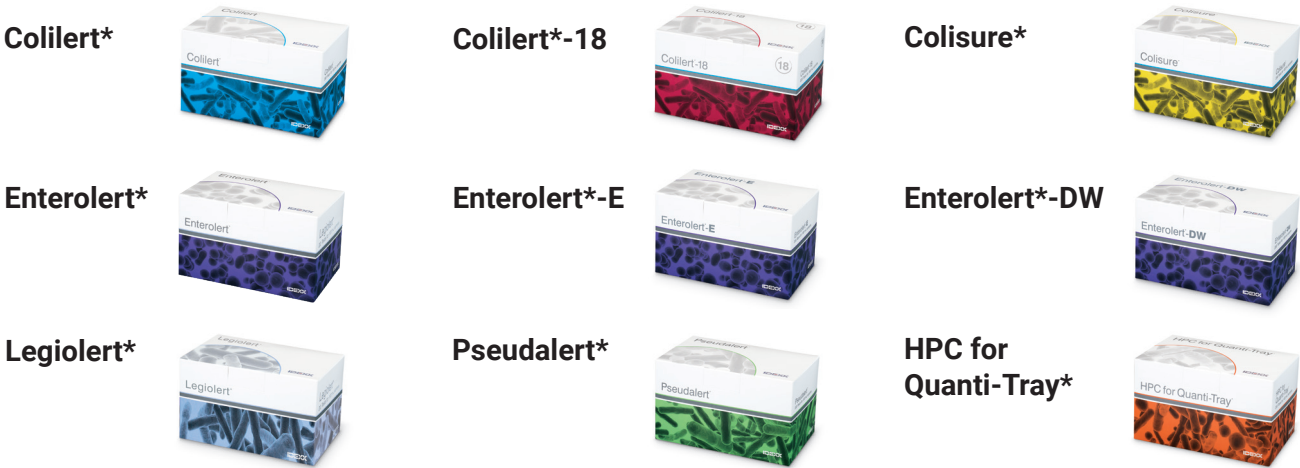
### Quanti-Tray, Quanti-Tray/2000, and Quanti-Tray/Legiolert

Quanti-Tray\* has 51 wells and provides counts of up to 200 MPN/100 mL. Quanti-Tray\*/2000 has 97 wells and provides counts from 1 to 2,419 MPN/100 mL. Both are compatible with most IDEXX reagents.

Quanti-Tray\*/Legiolert\* has 96 wells and provides *Legionella pneumophila* counts from 1 to 2,272 MPN/100 mL. This system is compatible with Legiolert\* reagents.



## The following tests can be processed with Quanti-Tray



# Innovative technology for laboratories worldwide

“Laboratory Anncy has used the Colilert Test and Quanti-Tray/2000 since May 2007 for drinking, raw, and natural waters. The Ecuadorian norm requires the use of standard methods and, by using IDEXX Water products, it was **possible to reduce the hands-on time to prepare media and samples** and to wash materials. We were able to increase the number of samples because we could optimize the incubator internal space and read total coliforms and *E. coli* in one tray. We congratulate IDEXX on their technological support and product expertise!”

Cecilia Morales, Laboratory Anncy

“...we have found the employees of IDEXX to be of the highest caliber. Not only does your company supply a **product of consistent quality at a competitive price, the sales and technical support staff at all levels are friendly, helpful, and responsive to our needs.** Product, pricing, and performance from our vendors are critical to accomplishing the mission of public health, and your company meets all three with flying colors.”

Julie Kinzelman, City of Racine Health Department Laboratory

“We have been using the Colilert Test since 2004 to sample our rivers and streams for *E. coli*. We have been **extremely pleased with the system and how simple it is to prepare samples.** I would highly recommend this to any watershed group looking for a reliable and easy method to test for *E. coli*.”

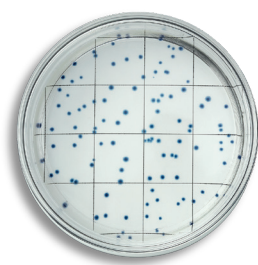
Tammy Gilpatrick, Blackstone River Coalition



# Heterotrophic plate count/total viable count testing

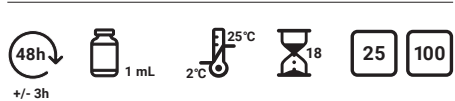
## EasyDisc platform

The EasyDisc\* platform provides heterotrophic plate count results without media preparation or burdensome quality control requirements. With a long shelf life and minimal hands-on time, EasyDisc is an easy-to-use platform that reduces waste and improves workflow.



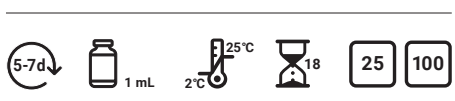
### EasyDisc\* PCA Test

HPC for drinking and source water in 48 hours at 35°C.



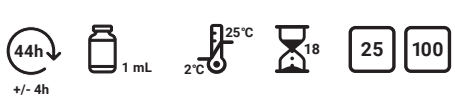
### EasyDisc\* R2A Test

HPC for medical and/or pharmaceutical waters in 5–7 days at 20–28°C.



### EasyDisc\* YEA Test

HPC for drinking and source water in 44 hours at 36°C or 68 hours at 22°C.



### EasyDisc\* DEV Test

HPC for drinking water and source water in Germany.



## SimPlate platform

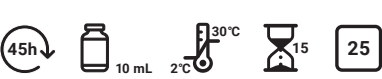
Multiple Enzyme Technology\* (MET\*) is the basis for IDEXX's SimPlate\* tests to detect heterotrophic bacteria in water. Reagents contain multiple unique enzyme substrates, each targeting a different bacterial enzyme. The enzyme substrates produce the same fluorescent signal when metabolized. SimPlate is an 84-well device that makes reading fluorescent wells simple.

IDEXX-QC HPC/TVC is also available for quality control purposes. See pages 18–19 for more details.



### SimPlate for HPC unit-dose kit

SimPlate\* for HPC unit-dose kit provides counts up to 73.8 MPN/1 mL.



### SimPlate for HPC multi-dose kit

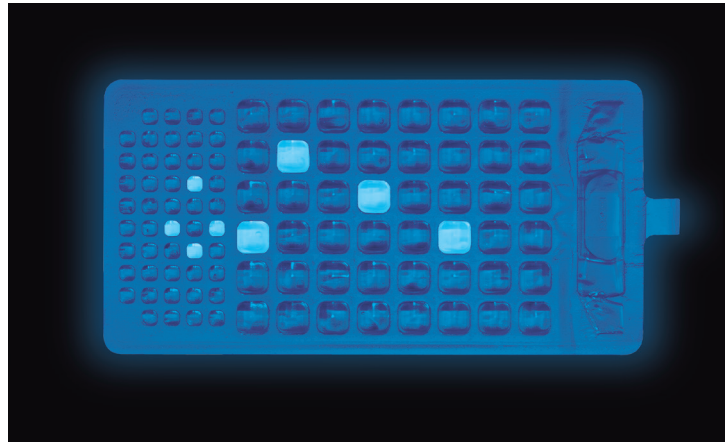
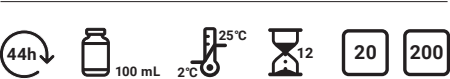
SimPlate\* for HPC multi-dose kit provides counts up to 738 MPN/1 mL.



## HPC for Quanti-Tray

HPC for Quanti-Tray\* is an easy and accurate test for determining heterotrophic plate counts in a 100 mL sample. Results are quantified using the Quanti-Tray\* or Quanti-Tray\*/2000. Positive results fluoresce under UV light.

IDEXX-QC HPC/TVC is also available for quality control purposes. See pages 18–19 for more details.





# Positive and negative culture controls for IDEXX reagents



IDEXX-QC offers a complete suite of microbiological QC kits. Using ISO 17034 certified materials and traceable strains derived from ATCC\*\* or NCTC\* reference cultures, IDEXX-QC kits are easy to use and purpose-built to meet certification and accreditation requirements. With target MPN values and acceptable ranges, IDEXX-QC is also a great solution for quantified demonstrations of capability.

IDEXX also partners with NSI Lab Solutions to offer proficiency testing in some regions.

\*\*ATCC is a registered trademark owned by the American Type Culture Collection. American Type Culture Collection; 1-800-638-6597, atcc.org.

\*National Collection of Type Cultures; culturecollections.org.uk.

## IDEXX-QC



- IDEXX-QC Coliform and *E. coli* Kit**
- Contains 3 *E. coli*, 3 *K. variicola*, 3 *P. aeruginosa*.
  - For use with Colilert\*, Colilert\*-18, and Colisure\* tests.



- IDEXX-QC *Legionella pneumophila* Kit**
- Contains 3 *L. pneumophila*, 3 *E. faecalis*.
  - For use with the Legiolert\* Test.



- IDEXX-QC Enterococci Kit**
- Contains 3 *E. faecalis*, 3 *E. coli*, 3 *S. bovis*.
  - For use with Enterolert\* and Enterolert\*-E tests.



- IDEXX-QC Fecal Coliform Kit**
- Contains 3 *E. coli*, 3 *P. aeruginosa*.
  - For use with the Colilert\*-18 Test.



- IDEXX-QC *Pseudomonas aeruginosa* Kit**
- Contains 3 *P. aeruginosa*, 3 *E. coli*, 3 *P. fluorescens*.
  - For use with the Pseudalert\* Test.



- IDEXX-QC HPC/TVC Kit**
- Contains 3 *E. faecalis*.
  - For use with EasyDisc\* tests, SimPlate\* for HPC, and HPC for Quanti-Tray\*.



- IDEXX-QC *E. coli* Kit**
- Contains 9 *E. coli*.
  - For use with Colilert\*, Colilert\*-18, and Colisure\* tests.



- IDEXX-QC Enterococci Drinking Water Kit**
- Contains 3 *E. faecalis*, 3 *E. coli*.
  - For use with the Enterolert\*-DW Test.

## Quanti-Cult\* QC Kit



For use with the Colilert, Colilert-18, and Colisure tests. Each prequantitated kit contains 3 samples of *Pseudomonas aeruginosa*, 3 samples of *Klebsiella pneumoniae*, and 3 samples of *Escherichia coli*.

# Testing accessories and equipment

## Sterile vessels and accessories

For both presence/absence and quantification testing, our vessels are available in three different sizes, with an array of features to meet your sample collection and preparation needs.



### Shrink-banded

The shrink band acts as a tamper-evident seal and protects the entire perimeter from possible contamination. These vessels are available in 120 mL, 150 mL, and 290 mL sizes and can be purchased with or without sodium thiosulfate.



### Tear-off label

The tear-off label serves as a tamper-evident seal and allows for recording of important sample information. These vessels are only available in a 120 mL size and can be purchased with or without sodium thiosulfate.



### PET collection vessels

This collection vessel is made of polyethylene terephthalate (PET) plastic with an 01 recyclability code. These vessels are only available in a 120 mL format with sodium thiosulfate and should be used for sample collection purposes only.



### Antifoam vessel

This sample vessel contains IDEXX antifoam solution to eliminate foaming when samples are added to the Colilert\*-18, Colisure\*, and Pseudalert\* tests. This vessel is only available in a 120 mL size and does not contain sodium thiosulfate.

## Vessel accessories



### Roll of labels

Roll of 1,000 adhesive labels showing date, time, location, and sample number.



### Vessel rack

Coated wire rack with a 20-vessel capacity. Compatible only with IDEXX 120 mL and 150 mL vessels.

## BINDER incubator

Digital incubator designed to operate from 5°C above ambient to 100°C with a temperature stability of  $\pm 0.5^\circ\text{C}$  at 37°C.



### Dimensions

22" W x 24.6" H x 22.2" L  
(56 cm x 63 cm x 57 cm)

### Chamber dimensions

14.2" W x 16.5" D x 15.0" L  
(36 cm x 42 cm x 38 cm)

## Water bath

Thermo Scientific digital water bath for use with all IDEXX products.



Only available in 100–115-volt format.

### Dimensions

19.75" W x 11.75" D x 6" H  
(50 cm x 30 cm x 15 cm)

### Temperature range

Cover open: ambient to 60°C;  
Cover closed: ambient to 100°C

## BOEKEL incubator

Digital incubator designed to operate from 10°C above ambient to 45°C with a temperature stability of  $\pm 0.5^\circ\text{C}$  at 35°C.



### Dimensions

14" W x 12.5" D x 12.5" H  
(36 cm x 32 cm x 32 cm)

### Chamber dimensions

12" W x 8.0" D x 6.0" H  
(31 cm x 21 cm x 16 cm)

## EZ DPD\* Chlorine Reagent

Dispenses U.S. EPA-accepted DPD reagent with the press of a button. Compatible with most chlorine test readers (not included).



### Shelf life

Up to 12 months at 2°C–25°C

### Uses

Total chlorine and free chlorine

## UV viewing cabinet

Aluminum cabinet with built-in UV-absorbing window, access curtain, and holding bracket for lamps (lamps not included).



### Dimensions

9" W x 12" D x 6.5" H  
(23 cm x 30 cm x 17 cm)

## UV lamp

6-watt fluorescent, 365 nm long-wave UV lamp with bulb.



### Dimensions

10" W x 3" D x 2.5" H  
(25.4 cm x 7.5 cm x 6 cm)



# Cryptosporidium and Giardia detection

IDEXX has the solutions you need for each step of the *Cryptosporidium* and *Giardia* testing process.

## Sampling and elution

The Filta-Max *xpress*\* system is a rapid, efficient technology for the capture and recovery of *Cryptosporidium* and *Giardia*. A foam filter inside a MKII filter housing and a fully automated Filta Max *xpress* Elution Station are designed specifically for efficient and rapid elution of *Cryptosporidium* and *Giardia* in less than 2 minutes.



Filter modules

IDEXX also offers EasySeed\* and ColorSeed\* controls for the *Cryptosporidium* and *Giardia* recovery process.



Filta-Max *xpress* Elution Station

## Immunomagnetic separation (IMS)

Immunomagnetic separation is a method used for the concentration and isolation of *Cryptosporidium* and *Giardia* in water. By utilizing IDEXX-provided Applied Biosystems Dynabeads\* products to execute the IMS process, the separation and isolation of such pathogens can be easy, rapid, and accurate.

**Note:** IDEXX also offers magnets, mixers, and other accessories for the IMS process.



## Identification and enumeration

IDEXX can supply both 9 mm single well and 12 mm triple well sides. We can also supply EasyStain\*, an immunofluorescence reagent for staining *Cryptosporidium* oocysts and *Giardia* cysts, which can be enumerated using fluorescence microscopy.

**Note:** Not all products are available in every region.

# Experience the IDEXX Difference.

IDEXX provides educational tools and account management solutions to help you manage your laboratory.



## IDEXX Water Academy



Our educational offerings are part of an ongoing commitment to our customers to help you grow professionally through online training from the IDEXX Water Academy, live webinars with industry experts, and customized news articles from *IDEXX Currents*.

[idexx.com/WaterEdu](http://idexx.com/WaterEdu)

## IDEXX Online Orders

Everything you need for easy, direct ordering of all your IDEXX tests and supplies.

## Water Customer Portal

Access account information, submit support tickets, and find helpful product information.

Product line overview

Item	Quantity	Catalog number	Product number	Page
------	----------	----------------	----------------	------

Coliform and E. coli testing11

Colilert				
Colilert* snap packs for 100 mL samples	20	<b>WP020I</b>	<b>98-12972-00</b>	11
	100	<b>WP100I</b>	<b>98-27163-00</b>	
	200	<b>WP200I</b>	<b>98-12973-00</b>	
Colilert* MPN tubes for 10 mL samples	100	<b>W100I</b>	<b>98-14770-00</b>	11
	200	<b>W200I</b>	<b>98-14771-00</b>	
Colilert* snap packs for 250 mL water samples	20	<b>WB250-20I</b>	<b>98-26016-00</b>	11
	100	<b>WB250-100I</b>	<b>98-26017-00</b>	
Colilert* snap packs for 100 mL samples/ Quanti-Tray* combo	20	<b>WCMB24-20</b>	<b>99-19149</b>	11
	100	<b>WCMB24-100</b>	<b>99-27057</b>	
	200	<b>WCMB24-200</b>	<b>99-27071</b>	
Colilert* snap packs for 100 mL samples/ Quanti-Tray*/2000 combo	20	<b>WCMB24-20-2K</b>	<b>99-19150</b>	11
	100	<b>WCMB24-100-2K</b>	<b>99-27058</b>	
	200	<b>WCMB24-200-2K</b>	<b>99-27072</b>	

Colilert-18				
Colilert*-18 snap packs for 100 mL samples	20	<b>WP020I-18</b>	<b>98-08876-00</b>	11
	100	<b>WP100I-18</b>	<b>98-27164-00</b>	
	200	<b>WP200I-18</b>	<b>98-08877-00</b>	
Colilert*-18 snap packs for 100 mL samples/ Quanti-Tray* combo	20	<b>WCMB18-20</b>	<b>99-19151</b>	11
	100	<b>WCMB18-100</b>	<b>99-27059</b>	
	200	<b>WCMB18-200</b>	<b>99-27073</b>	
Colilert*-18 snap packs for 100 mL samples/ Quanti-Tray*/2000 combo	20	<b>WCMB18-20-2K</b>	<b>99-19152</b>	11
	100	<b>WCMB18-100-2K</b>	<b>99-27060</b>	
	200	<b>WCMB18-200-2K</b>	<b>99-27074</b>	

Colisure				
Colisure* snap packs for 100 mL samples	20	<b>WCLS20I</b>	<b>98-13159-00</b>	11
	100	<b>WCLS100I</b>	<b>98-27709-00</b>	
	200	<b>WCLS200I</b>	<b>98-13174-00</b>	
Colisure* snap packs for 100 mL samples/ Quanti-Tray* combo	20	<b>WCMBCLS-20</b>	<b>99-19153</b>	11
	100	<b>WCMBCLS-100</b>	<b>99-27061</b>	
	200	<b>WCMBCLS-200</b>	<b>99-27075</b>	
Colisure* snap packs for 100 mL samples/ Quanti-Tray*/2000 combo	20	<b>WCMBCLS-20-2K</b>	<b>99-19154</b>	11
	100	<b>WCMBCLS-100-2K</b>	<b>99-27062</b>	
	200	<b>WCMBCLS-200-2K</b>	<b>99-27076</b>	

Colilert/Colilert-18 comparators				
Colilert*/Colilert*-18 P/A comparator	1	<b>WP104</b>	<b>98-11682-00</b>	11
Colilert*/Colilert*-18 Quanti-tray comparator	1	<b>WQTC</b>	<b>98-09226-00</b>	11
Colilert*/Colilert*-18 Quanti-Tray/2000 comparator	1	<b>WQT2KC</b>	<b>98-09227-00</b>	11
Colilert* MPN tube comparator	1	<b>W102</b>	<b>98-20722-00</b>	11

**Note:** The information in this section may be updated after publication of the catalog. Please contact IDEXX for the latest information.

Item	Quantity	Catalog number	Product number	Page
------	----------	----------------	----------------	------

Enterococci testing12

Enterolert				
Enterolert* snap packs for 100 mL samples	20	<b>WENT020</b>	<b>98-21374-00</b>	12
	200	<b>WENT200</b>	<b>98-21375-00</b>	
Enterolert* snap packs for 100 mL samples/ Quanti-Tray* combo	20	<b>WCMBENT-20</b>	<b>99-19155</b>	12
	200	<b>WCMBENT-200</b>	<b>99-27077</b>	
Enterolert* snap packs for 100 mL samples/ Quanti-Tray*/2000 combo	20	<b>WCMBENT-20-2K</b>	<b>99-19156</b>	12
	200	<b>WCMBENT-200-2K</b>	<b>99-27078</b>	

Enterolert-E				
Enterolert*-E snap packs for 100 mL samples	20	<b>WENTE-020</b>	<b>98-09529-00</b>	12
	200	<b>WENTE-200</b>	<b>98-09530-00</b>	
Enterolert*-E snap packs for 100 mL samples/ Quanti-Tray* combo	20	<b>WCMBENTE-20</b>	<b>99-19157</b>	12
		<b>WCMBENTE-200</b>	<b>99-27081</b>	
Enterolert*-E snap packs for 100 mL samples/ Quanti-Tray*/2000 combo	20	<b>WCMBENTE-20-2K</b>	<b>99-19158</b>	12
	200	<b>WCMBENTE-200-2K</b>	<b>99-27082</b>	

Enterolert-DW				
Enterolert*-DW snap packs for 100 mL samples	20	<b>WENTDW-020</b>	<b>98-18072-00</b>	12
	200	<b>WENTDW-200</b>	<b>98-18074-00</b>	
Enterolert*-DW snap packs for 100 mL samples/ Quanti-Tray* combo	20	<b>WCMBENTD-20</b>	<b>99-27055</b>	12
	200	<b>WCMBENTD-200</b>	<b>99-27083</b>	
Enterolert*-DW snap packs for 100 mL samples/ Quanti-Tray*/2000 combo	20	<b>WCMBENTD-20-2K</b>	<b>99-27056</b>	12
	200	<b>WCMBENTD-200-2K</b>	<b>99-27084</b>	

Enterolert 250				
Enterolert* 250 snap packs for 250 mL samples	20	<b>WENT250-20</b>	<b>98-26897-00</b>	12

Pseudomonas aeruginosa testing13

Pseudalert				
Pseudalert* snap packs for 100 mL samples	20	<b>WPSE020I</b>	<b>98-18076-00</b>	13
	200	<b>WPSE200I</b>	<b>98-18078-00</b>	
Pseudalert* snap packs for 250 mL samples	20	<b>WPSE25020I</b>	<b>98-26014-00</b>	13
Pseudalert* snap packs for 100 mL samples/ Quanti-Tray* combo	20	<b>WCMBPA-20</b>	<b>99-27053</b>	13
	200	<b>WCMBPA-200</b>	<b>99-27079</b>	
Pseudalert* snap packs for 100 mL samples/ Quanti-Tray*/2000 combo	20	<b>WCMBPA-20-2K</b>	<b>99-27054</b>	13
	200	<b>WCMBPA-200-2K</b>	<b>99-27080</b>	

Item	Quantity	Catalog number	Product number	Page
------	----------	----------------	----------------	------

Legionella pneumophila testing13

Legiolert				
Legiolert* snap packs for 100 mL samples	20	<b>WLGT-20</b>	<b>98-0002710-00</b>	13
	100	<b>WLGT-100</b>	<b>98-0005738-00</b>	
Legiolert* Pretreatment, 2 pack	100+ tests	<b>WLGT-PRE</b>	<b>98-0007740-01</b>	13
Legiolert* Supplement	100+ tests	<b>WLGT-SUP</b>	<b>98-0005745-01</b>	13

IDEXX Tecta\* system10

Tecta* instruments				
Tecta* B4, 115V	1	TECTAB4A-115-01	98-0018011-00	10
Tecta* B4, 230V		TECTAB4A-230-01	98-0018020-00	
Tecta* B16, 115V	1	TECTAB16A-115-02	98-0018010-00	10
Tecta* B16, 230V		TECTAB16A-230-02	98-0018019-00	
Tecta* test cartridges				
Tectalert* EC/TC (CCA)	48	TECTA-CCA-48	98-0018012-00	11
	192	TECTA-CCA-192	99-0018158	
Tectalert* EC (ECA)	48	TECTA-ECA-48	98-0018013-00	11
	192	TECTA-ECA-192	99-0018159	
Tectalert* FC (FCA)	48	TECTA-FCA-48	98-0018014-00	11
	192	TECTA-FCA-192	99-0018160	
Tectalert* ENT (ENA)	48	TECTA-ENA-48	98-0018015-00	12
	192	TECTA-ENA-192	99-0018161	

Quanti-Tray\* quantification system14

Quanti-Tray Sealer PLUS				
Quanti-Tray* Sealer PLUS	1	<b>WQTSPLUS</b>	<b>98-0002570-00</b>	14
Quanti-Tray* rubber insert	1	<b>WPLUSRBR-51</b>	<b>98-9011769-00</b>	14
Quanti-Tray*/2000 rubber insert	1	<b>WPLUSRBR-2K</b>	<b>98-9011770-00</b>	14
Quanti-Tray*/Legiolert* rubber insert	1	<b>WPLUSRBR-LGT</b>	<b>98-9012534-00</b>	14

Quanti-Tray, Quanti-Tray/2000, and Quanti-Tray/Legiolert				
Quanti-Tray*	100	<b>WQT100</b>	<b>98-21378-00</b>	14
Quanti-Tray*/2000	100	<b>WQT-2K</b>	<b>98-21675-00</b>	14
Quanti-Tray*/Legiolert*	20	<b>WQTLGT-20</b>	<b>98-0005796-00</b>	14
	100	<b>WQTLGT-100</b>	<b>98-0005754-00</b>	

Item	Quantity	Catalog number	Product number	Page
------	----------	----------------	----------------	------

Heterotrophic plate count/total viable count testing16

EasyDisc				
EasyDisc* PCA for 1 mL samples	25	<b>WPCA25</b>	<b>98-0013455-00</b>	16
	100	<b>WPCA100</b>	<b>98-0013454-00</b>	
EasyDisc* YEA for 1 mL samples	25	<b>WYEA25</b>	<b>98-0013453-00</b>	16
	100	<b>WYEA100</b>	<b>98-0013452-00</b>	
EasyDisc* R2A for 1 mL samples	25	<b>WR2A25</b>	<b>98-0013457-00</b>	16
	100	<b>WR2A100</b>	<b>98-0013456-00</b>	
EasyDisc* DEV for 1 mL samples	25	<b>WDEV25</b>	<b>98-0016604-00</b>	16
	100	<b>WDEV100</b>	<b>98-0016605-00</b>	

SimPlate for HPC				
SimPlate* for HPC unit-dose kit	25	<b>WHPC-25</b>	<b>98-05760-01</b>	17
SimPlate* for HPC multi-dose kit	100	<b>WHPC-100</b>	<b>98-05761-01</b>	17
SimPlate* for HPC media-only kit	40	<b>WHPC-40M</b>	<b>98-12860-00</b>	17
Sterile water, 100 mL bottles	10	<b>WSW-10</b>	<b>98-09444-01</b>	17
Pipettes, sterile, disposable, 1 mL	25	<b>W1ML-PIP-25</b>	<b>98-06155-00</b>	17
Pipettes, sterile, disposable, 5 mL	25	<b>W5ML-PIP-25</b>	<b>98-06156-00</b>	17

HPC for Quanti-Tray				
HPC for Quanti-Tray*	20	<b>WHQT-20</b>	<b>98-27389-00</b>	17
	200	<b>WHQT-200</b>	<b>98-27390-00</b>	
HPC for Quanti-Tray*/ Quanti-Tray* combo	20	<b>WHQTC-20</b>	<b>99-27853</b>	17
	200	<b>WHQTC-200</b>	<b>99-27854</b>	
HPC for Quanti-Tray*/ Quanti-Tray*/2000 combo	20	<b>WHQT2K-20</b>	<b>99-27855</b>	17
	200	<b>WHQT2K-200</b>	<b>99-27856</b>	

SARS-CoV-2 testing

Water SARS-CoV-2 RT-PCR Test				
Water SARS-CoV-2 RT-PCR Test with Internal Control	Other	<b>WCOV2PCR-IC</b>	<b>99-0015314</b>	
Water SARS-CoV-2 RT-PCR Test	100	<b>WCOV2PCR</b>	<b>98-0014718-00</b>	
Water SARS-CoV-2 Mag Bead Kit (Extraction)	384	<b>WCOV2MAG</b>	<b>98-0014719-00</b>	
IDEXX Water Internal Control	Other	<b>WCOV2IC</b>	<b>99-57010</b>	
Water Matrix Fecal Control Mix	100	<b>WCOV2MFC</b>	<b>98-0016622-00</b>	



Product line overview

Item	Quantity	Catalog number	Product number	Page
------	----------	----------------	----------------	------

Positive and negative culture controls for IDEXX reagents

IDEXX-QC				
IDEXX-QC Coliform and <i>E. coli</i> ( <i>E. coli</i> , <i>K. variicola</i> , <i>P. aeruginosa</i> )	3 each	WQC-TCEC	98-29000-01	19
IDEXX-QC Fecal Coliform ( <i>E. coli</i> , <i>P. aeruginosa</i> )	3 each	WQC-FC	98-29001-01	19
IDEXX-QC Enterococci ( <i>E. faecalis</i> , <i>E. coli</i> , <i>S. bovis</i> )	3 each	WQC-ENT	98-29002-01	19
IDEXX-QC Enterococci Drinking Water ( <i>E. faecalis</i> , <i>E. coli</i> )	3 each	WQC-ENTDW	98-29003-02	19
IDEXX-QC <i>Pseudomonas aeruginosa</i> ( <i>P. aeruginosa</i> , <i>E. coli</i> , <i>P. fluorescens</i> )	3 each	WQC-PSE	98-29004-01	19
IDEXX-QC HPC ( <i>E. faecalis</i> )	3 each	WQC-HPC	98-29006-01	19
IDEXX-QC <i>E. coli</i> ( <i>E. coli</i> )	9 each	WQC-EC	98-29007-01	19
IDEXX-QC <i>Legionella pneumophila</i> ( <i>L. pneumophila</i> , <i>E. faecalis</i> )	3 each	WQC-LP	98-0009287-01	19
Quanti-Cult QC Kit				
Quanti-Cult* QC Kit ( <i>E. coli</i> , <i>K. pneumoniae</i> , <i>P. aeruginosa</i> )	3 each	WKIT 1001	98-20748-01	19

Testing accessories and equipment

Antifoam solution				
Antifoam solution, 20 mL dropper bottle	1	WAFDB	98-21904-00	20
Sterile vessels and accessories				
120 mL shrink-banded vessels without sodium thiosulfate	20 200	WV120SB-20 WV120SB-200	98-09204-00 98-09222-00	20
120 mL shrink-banded vessels with sodium thiosulfate	20 200	WV120SBST-20 WV120SBST-200	98-09220-00 98-09221-00	20
120 mL shrink-banded PET vessels with sodium thiosulfate	200	WV120PET-200	98-18739-00	20
120 mL shrink-banded vessels with antifoam solution	200	WV120SBAF-200	98-06161-00	20

Item	Quantity	Catalog number	Product number	Page
------	----------	----------------	----------------	------

150 mL shrink-banded vessels without sodium thiosulfate	200	WV150SB-200	98-14079-00	20
150 mL shrink-banded vessels with sodium thiosulfate	200	WV150SBST-200	98-09223-00	20
290 mL shrink-banded vessels without sodium thiosulfate	100	WV290SB-100	98-14269-00	20
290 mL shrink-banded vessels with sodium thiosulfate	100	WV290SBST-100	98-09588-00	20
120 mL tear-off label vessels without sodium thiosulfate	20 200	WV120-20 WV120-200	98-09228-00 98-06160-00	20
120 mL tear-off label vessels with sodium thiosulfate	20 200	WV120ST-20 WV120ST-200	98-09203-00 98-06159-00	20

Vessel accessories

Vessel rack, fits up to 20 vessels	1	WVR20	98-20745-00	20
Adhesive vessel labels (roll of 1,000)	1	WLBL	04-02028-00	20

BINDER incubator

BINDER incubator, 115 V, 60 Hz	1	WI600	98-13818-03	21
BINDER incubator, 230 V, 50/60 Hz	1	WI600-EU	98-13561-01	21

BOEKEL incubator

Boekel mini incubator, 115 V, 60 Hz	1	WI350	98-0001197-00	21
Boekel mini incubator, 230 V, 50/60 Hz	1	WI350-EU	98-0001198-00	21

Water bath

Thermo Scientific digital water bath, 100–115 V	1	WBATH-100	98-05894-00	21
---	---	-----------	-------------	----

EZ DPD\* Chlorine Reagent

Dispenser and EZ DPD* vial for up to 10 mL free chlorine	200	WDPD10FD	98-09406-01	21
Two EZ DPD* refill vials for up to 10 mL free chlorine	400	WDPD10FR-2	98-09408-01	21
Dispenser and EZ DPD* vial for up to 10 mL total chlorine	200	WDPD10TD	98-09409-01	21

Item	Quantity	Catalog number	Product number	Page
------	----------	----------------	----------------	------

Two EZ DPD* refill vials for up to 10 mL total chlorine	400	WDPD10TR-2	98-09411-01	21
---	-----	------------	-------------	----

UV viewing cabinet

UV viewing cabinet	1	WCM10	98-21322-00	21
--------------------	---	-------	-------------	----

UV lamp

UV lamp, 110 V	1	WL160	98-20724-01	21
UV lamp, 220 V-UK	1	WEA160	98-09524-00	21
UV lamp, 220 V-EU	1	WEA160F	98-20951-00	21
6 watts, 9" replacement UV bulb	1	WL161	98-20960-01	21
4-watt portable UV lamp	1	WL200	98-06423-00	21
4 watts, 6" replacement UV bulb	1	WL201	98-20959-00	21

Cryptosporidium/Giardia detection

Filta-Max xpress\* consumables

Filter modules	10	FMC6001	98-08677-00	22
----------------	----	---------	-------------	----

Filta-Max xpress\* equipment

Pressure elution station		FMC6002	99-17646	22
Sampling kit		FMC6005	98-08681-00	22
Housing conversion kit		FMC6006	98-08682-00	22
Housing (with fittings)		FMC6007	98-08683-00	22
Hose kit		FMC6004	98-08355-00	22
Outlet diverter fitting		FMC6008	98-08684-00	22
Hose tail		FMC6013	98-08689-00	22
QF stem		FMC6009	98-08685-00	22
QF body		FMC6010	98-08686-00	22
QC stem		FMC6011	98-08687-00	22
QC body		FMC6012	98-08688-00	22
Buffer reservoir kit		FMC6016	98-08420-00	22
MKII filter housing (no fittings)		FMC10503	98-09712-00	22

Filta-Max\* consumables

Filter modules—UK only	10	FMC10602	98-14132-00	22
Filter modules—all other countries	10	FMC10603	98-10601-00	22
Filter membranes, 73 mm membranes	100	FMC10800	98-10800-00	22

Item	Quantity	Catalog number	Product number	Page
------	----------	----------------	----------------	------

Filta-Max\* equipment

Starter kit	1	FMC11002	98-11002-01	22
Manual wash station	1	FMC10101	98-10102-01	22
Tubing set	1	FMC10307	98-09686-00	22
Quick connect kit (for tubing set)	1	FMC10305	98-09466-00	22
Vacuum set	1	FMC10401	98-10401-01	22
Housing tools (pair)	1	FMC10506	98-09446-01	22
MKII filter housing	1	FMC10504	98-09445-01	22
MKII filter housing (UK DWI RegCompliant)	1	FMC10505	98-10505-02	22

Filta-Max\* controls

ColorSeed*	4 vials 10 vials	CS4CG100 CSCG100	98-0005942-00 98-0005940-00	22
EasySeed* Custom Crypto	10 vials	ESC100	98-0005943-00	22
EasySeed*	5 vials 10 vials	ESCG100-5 ESCG100	98-0005945-00 98-0005944-00	22

Immunomagnetic separation (IMS)

Dynabead* anti- <i>Cryptosporidium</i>	10 tests 50 tests	73001 73011	98-14285-00 98-14288-00	22
Dynabeads* GC-Combo	10 tests 50 tests	73002 73012	98-14286-00 98-14289-00	22
HulaMixer*	1	15920D	98-0011663-00	22
Dynabeads* MPC*-1	1	12001D	98-14300-00	22
Dynabeads* MPC*-6	1	12002D	98-14301-00	22
Dynabeads* MPC*-S	1	A13346	98-14302-00	22
Dynal* L10 Tubes	5	74003	98-14298-00	22

Identification and enumeration

EasyStain*	20 tests 80 tests	EST-CG20-D EST-CG80-D	98-0006695-00 98-0005946-00	22
Microscope 3 x 12mm Well Slide	25 slides	CG-3WS-X25	98-0011663-00	22
IDEXX Singlespot Slides (1 x 9mm Well)	100 slides	30201	98-14942-00	22

As one of the world's preferred providers of water microbiology test kits, IDEXX is known for its breakthrough products. We provide easy, rapid, accurate, and cost-effective solutions for all your water-testing needs. Our sales, customer service, and technical support teams serve customers worldwide.

**Call today for a demonstration of how IDEXX can provide solutions for all your water-testing needs.**

North America: 1 207 556 4496 or 1 800 321 0207

Latin America: +0800 728 2482

Europe: +00800 727 43399

UK: +44 01638 676800

China: 400 678 6682, ext. 2

Japan: +81 3 5301 6800

Australia: +1300 44 33 99

Korea: 080 7979 133

[idexx.com/water](https://www.idexx.com/water)



© 2025 IDEXX Laboratories, Inc. All rights reserved. • 09-79934-07 • The IDEXX Privacy Policy is available at [idexx.com](https://www.idexx.com).

\*Colilert, Colisure, Defined Substrate Technology, DST, EasyDisc, Enterolert, EZ DPD, Filta-Max, Filta-Max xpress, Legiolert, MET, Multiple Enzyme Technology, Pseudalert, Tecta, and Quanti-Tray are trademarks or registered trademarks of IDEXX Laboratories, Inc. in the United States and/or other countries. SimPlate is a trademark or a registered trademark of Merck KGaA, Darmstadt, Germany and is used by IDEXX under license from BioControl Systems, Inc. ATCC is a registered trademark owned by the American Type Culture Collection. Quanti-Cult is a trademark or registered trademark of Remel, Inc. ColorSeed, EasySeed, and EasyStain are trademarks or registered trademarks of BioPoint Pty Ltd. Swagelok is a trademark or registered trademark of Swagelok Company. Dynabeads, Dynal, HulaMixer, and MPC are trademarks of Thermo Fisher Scientific Inc. All other product and company names and logos are trademarks or registered trademarks of their respective holders.