

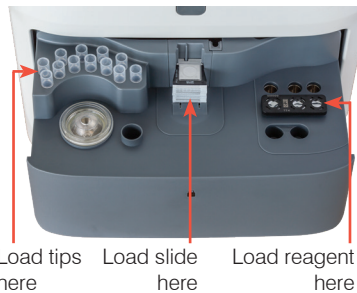
Quick Reference Guide

Storage and handling requirements

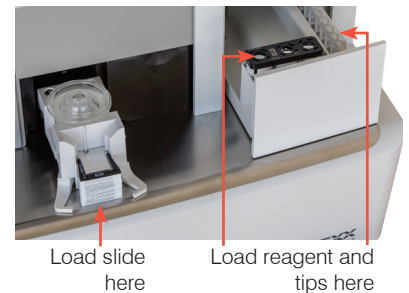
- Store in the refrigerator. Do not freeze.
- No warming required—run directly from the refrigerator.
- Total T₄ (TT₄) slides and reagent can be stored in their pouch at room temperature for up to 8 hours. After 8 hours, store any unused materials in the refrigerator.
- Recommended sample volume:
 - Whole blood: 600–800 μL
 - Serum/plasma: 65 μL (300 μL if running with other slides)

Total T₄ made simple—load and go

Catalyst One*



Catalyst Dx*



Frequently asked questions

Question	Answer									
Is the Catalyst* Total T ₄ Test just a slide?	No, the Catalyst* Total T ₄ Test contains a single slide and a reagent (conjugate, wash, and substrate). Both components must be run together for each sample run and then discarded.									
What sample types can be run on the total T ₄ test?	Compatible sample types include serum, lithium heparin plasma, and whole blood using the Catalyst* Lithium Heparin Whole Blood Separator.									
Which species have been validated for the total T ₄ test?	Canine and feline species are supported with total T ₄ .									
Can the total T ₄ test be run with other slides?	Yes! The total T ₄ test can be run alone or with other slides as part of a comprehensive patient profile. For example, you could run a Catalyst* Lyte 4 CLIP, a Catalyst* Chem 17 CLIP, SDMA, and a total T ₄ test with one patient sample.									
When running with other slides, should the total T ₄ test be loaded in a particular order?	<p>Catalyst One: When running with other chemistry slides, the TT₄ slide can be loaded in any order. If running with electrolyte slides, load the electrolyte slides first. For the quickest time to results, the recommended load order is Lyte 4 CLIP, chemistry CLIP (e.g., Chem 17, Chem 10, etc.), SDMA, TT₄, with additional slides on top.</p> <p>Catalyst Dx: If there are 18 slides or fewer in the run, the TT₄ slide can be loaded in any order (if running with electrolyte slides, load the electrolyte slides first). For runs containing more than 18 slides, load the TT₄ slide in the first 18 slides (if running with electrolyte slides, load the electrolyte slides first). For the quickest time to results, the recommended load order is Lyte 4 CLIP, chemistry CLIP (e.g., Chem 17, Chem 10, etc.), TT₄, with additional slides on top.</p> <p>For more information about the slide order for other chemistries, see the <i>Catalyst Chemistry Analyzer Operator's Guide</i>.</p>									
At what range will the total T ₄ test report a numerical result?	<table border="1"> <thead> <tr> <th>Species</th> <th>U.S. Units</th> <th>S.I./French S.I. Units</th> </tr> </thead> <tbody> <tr> <td>Canine</td> <td>0.5–10.0 $\mu\text{g/dL}$</td> <td>6.4–128.7 nmol/L</td> </tr> <tr> <td>Feline</td> <td>0.5–20.0 $\mu\text{g/dL}$</td> <td>6.4–257.4 nmol/L</td> </tr> </tbody> </table>	Species	U.S. Units	S.I./French S.I. Units	Canine	0.5–10.0 $\mu\text{g/dL}$	6.4–128.7 nmol/L	Feline	0.5–20.0 $\mu\text{g/dL}$	6.4–257.4 nmol/L
Species	U.S. Units	S.I./French S.I. Units								
Canine	0.5–10.0 $\mu\text{g/dL}$	6.4–128.7 nmol/L								
Feline	0.5–20.0 $\mu\text{g/dL}$	6.4–257.4 nmol/L								
What is the run time for the total T ₄ test?	Total T ₄ test results are available in approximately 15 minutes after the start of the run.									
Is it okay to dilute samples that are undergoing total T ₄ testing?	IDEXX does not support the use of diluted samples when running the Catalyst Total T ₄ Test.									
How often can total T ₄ tests be left at room temperature and then returned to the refrigerator?	Once at room temperature, total T ₄ tests can be returned to the refrigerator up to 5 times as long as the foil pouch is unopened.									
What if a total T ₄ test is accidentally frozen?	Any tests suspected of being frozen up to 8 hours should be allowed to thaw at room temperature for at least 30 minutes before use. Tests frozen for more than 8 hours, or multiple times, should be discarded.									
Should I run quality control for total T ₄ ?	Quality control is not required but is available through IDEXX Technical Support.									