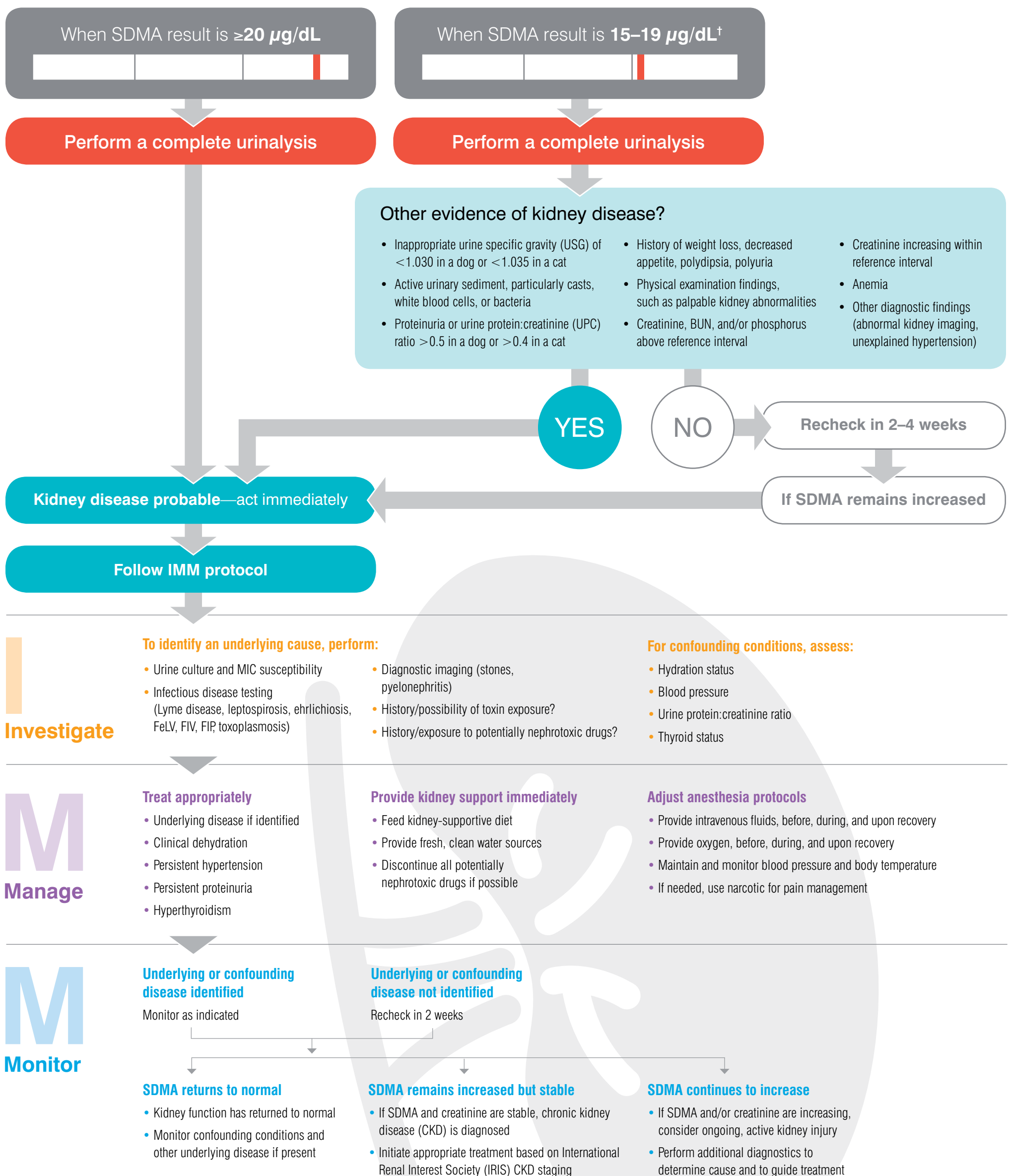


IDEXX SDMA[®] Test Algorithm

SDMA can increase with both active or acute kidney injury, as well as chronic kidney disease.

Take action when SDMA* results are increased. Follow this algorithm to determine if kidney disease is probable and what steps you should take to investigate, manage, and monitor the disease.



The IDEXX SDMA Test is more reliable than creatinine. SDMA increases earlier than creatinine in dogs and cats as kidney function decreases. And unlike creatinine, SDMA is not impacted by muscle mass.[‡]

[†]SDMA reference interval is 0–14 µg/dL. However, in puppies, the SDMA reference interval is 0–16 µg/dL. SDMA reference interval studies are underway for kittens and greyhounds, and results may also be slightly higher and should be interpreted in light of other findings.

To further discuss management of your patient based on IDEXX SDMA Test results, please call our Internal Medicine Consulting Service at **1-888-433-9987, option 4.**

*Symmetric dimethylarginine.

[‡]To see the proof and a complete list of references, visit idexx.com/sdma.