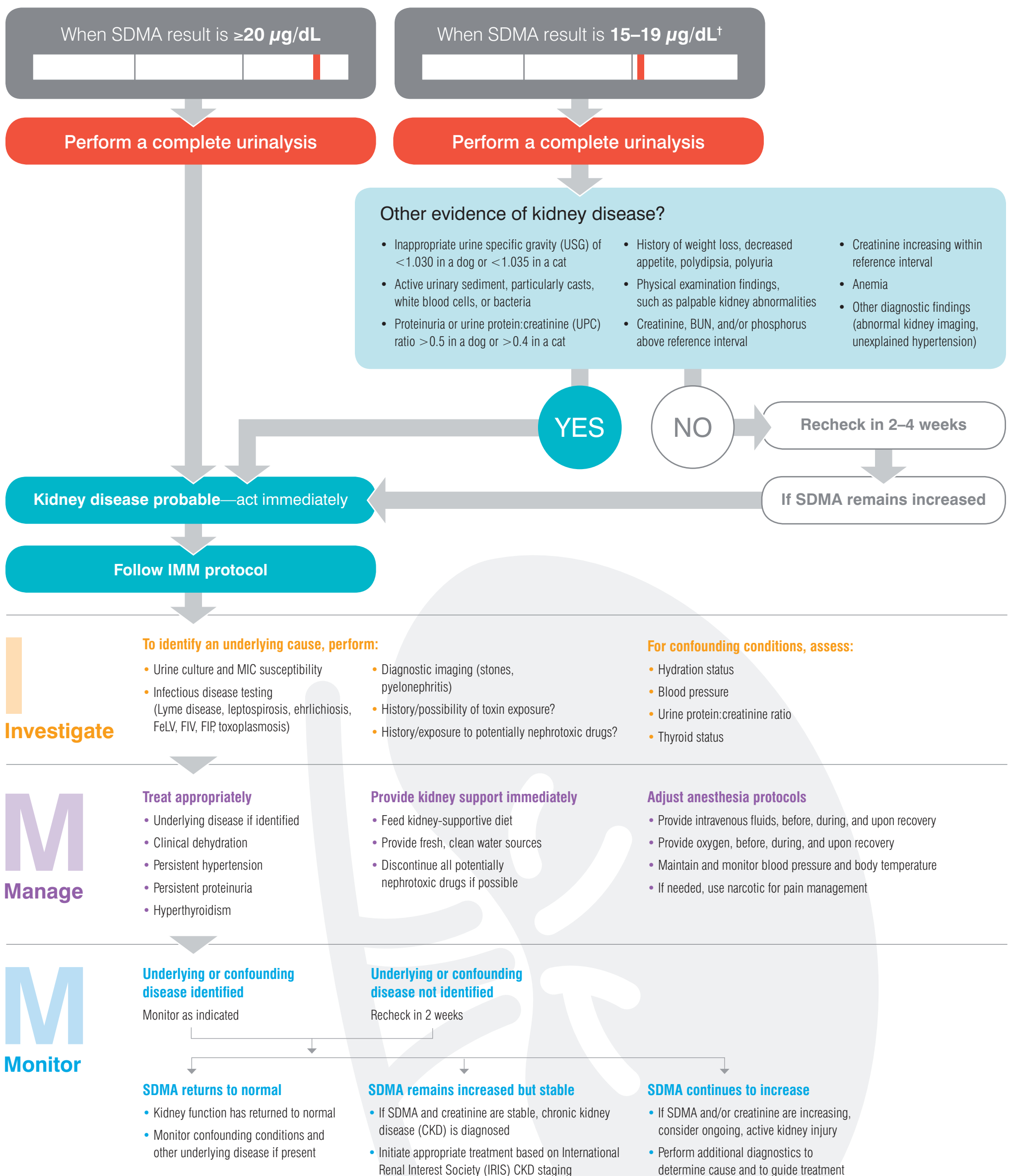


# IDEXX SDMA<sup>®</sup> Test Algorithm

SDMA can increase with both active or acute kidney injury, as well as chronic kidney disease.

Take action when SDMA\* results are increased. Follow this algorithm to determine if kidney disease is probable and what steps you should take to investigate, manage, and monitor the disease.



## The IDEXX SDMA Test is more reliable than creatinine.

SDMA increases earlier than creatinine in dogs and cats as kidney function decreases. And unlike creatinine, SDMA is not impacted by muscle mass.\*

\*Symmetric dimethylarginine.

<sup>†</sup>SDMA reference interval for cats, kittens, and adult dogs is  $0\text{--}14 \mu\text{g/dL}$ . In puppies, the SDMA reference interval is  $0\text{--}16 \mu\text{g/dL}$ . Read the full report at [IDEXX.com/sdmapeds](http://IDEXX.com/sdmapeds).

<sup>‡</sup>To see the proof and a complete list of references, visit [idexx.com/sdma](http://idexx.com/sdma).

For questions regarding IDEXX SDMA Test results, please contact our Customer Support Team at **1-888-433-9987**.