

# Vertebral heart score with a single click



Using artificial intelligence, IDEXX Web PACS\* can now generate a vertebral heart score (VHS) instantly and automatically.

Just select the VHS tool in the Advanced Viewer and IDEXX Web PACS will:

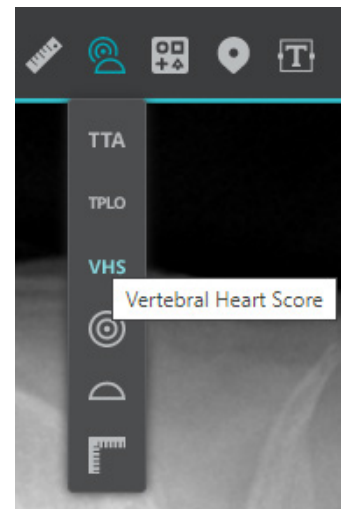
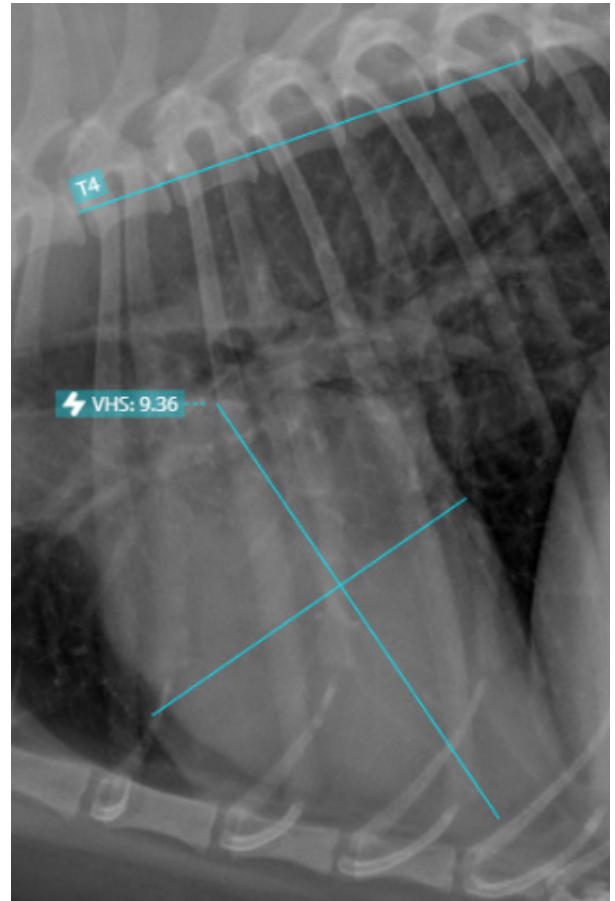
- **Detect** the vertebrae and heart in a thoracic right lateral radiograph;
- **Apply** the spinal measurement line across the vertebrae and the axis lines across the heart;
- **Calculate** the measurement ratio; and **display** the vertebral heart score.

You can accept the score as is, or adjust the template manually to recalculate the score.

You'll know at a glance whether the VHS template has been manually adjusted:

- The  icon and blue lines mean IDEXX Web PACS placed the VHS template.
- The  icon and yellow lines mean the template has been manually adjusted and the score recalculated.

Now easier than ever to use, the IDEXX Web PACS **vertebral heart score tool** delivers valuable information for screening, tracking, and monitoring.



Look for new features and enhancements in every IDEXX Web PACS update.